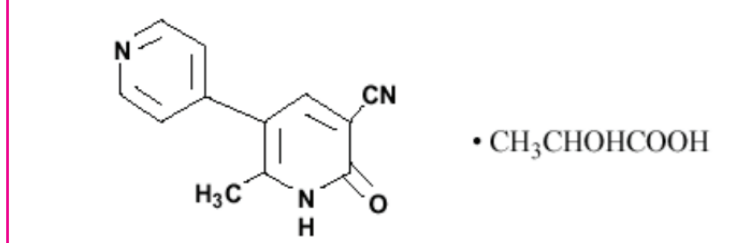


Milirone Lactate in 5% Dextrose Injection

DESCRIPTION

Milirone lactate is a member of a new class of bipyridine inotropic/vasodilator agents with phosphodiesterase inhibitor activity, distinct from digitalis glycosides or catecholamines. Milirone lactate is designated chemically as 1,6'- dihydro-2-methyl-6-oxo-[3,4'-bipyridine]-5-carbonitrile lactate and has the following structure:



Milirone, USP is a white to tan crystalline compound with a molecular weight of 211.2 and a molecular formula of C₁₄H₁₀N₂O. It is freely soluble in dimethyl sulfoxide; very slightly soluble in methanol, practically insoluble in water and in chloroform. As the lactate salt, it is stable and colorless to pale yellow in solution. Milirone is available as sterile aqueous solutions of the lactate salt of milirone for infusion intravenously. The Flexible containers provide two ready-to-use dilutions of milirone in volumes of 100 mL and 200 mL of 5% Dextrose Injection. Each mL contains milirone lactate equivalent to 200 mcg milirone. The nominal concentration of lactic acid is 0.282 mg/mL. Each mL also contains 54.3 mg dextrose, hydrous, USP. The pH is adjusted to between 3.2 and 4.0 with lactic acid and/or sodium hydroxide. The flexible plastic container is comprised of polypropylene with a foil overwrap. Water can permeate the plastic into the overwrap, but the amount is insufficient to significantly affect the premixed solution.

CLINICAL PHARMACOLOGY

Milirone is a positive inotrope and vasodilator, with little chronotropic activity different in structure and mode of action from either the digitalis glycosides or catecholamines.

Milirone at relevant inotropic and vasorelaxant concentrations, is a selective inhibitor of peak III cAMP phosphodiesterase isozyme in cardiac and vascular muscle. This inhibitory action is consistent with cAMP mediated increases in intracellular ionized calcium and contractile force in cardiac muscle, as well as with cAMP dependent contractile protein phosphorylation and relaxation in vascular muscle. Additional experimental evidence also indicates that Milirone is not a beta-adrenergic agonist nor does it inhibit sodium-potassium adenosine triphosphatase activity as do the digitalis glycosides.

Clinical studies in patients with congestive heart failure have shown that Milirone produces dose-related and plasma drug concentration-related increases in the maximum rate of increase of left ventricular pressure. Studies in normal subjects have shown that milirone produces increases in the slope of the left ventricular pressure-dimension relationship, indicating a direct inotropic effect of the drug. Milirone also produces dose-related and plasma concentration-related increases in forearm blood flow in patients with congestive heart failure, indicating a direct arterial vasodilator activity of the drug.

Both the inotropic and vasodilatory effects have been observed over the therapeutic range of plasma milirone concentrations of 100 ng/mL to 300 ng/mL.

In addition to increasing myocardial contractility, milirone improves diastolic function as evidenced by improvements in left ventricular diastolic relaxation.

The acute administration of intravenous milirone has also been evaluated in clinical trials in excess of 1600 patients, with chronic heart failure, heart failure associated with cardiac surgery, and heart failure associated with myocardial infarction. The total number of deaths, either on therapy or shortly thereafter (24 hours) was 15, less than 0.9%, few of which were thought to be drug-related.

PHARMACOKINETICS

Following intravenous injections of 12.5 mcg/kg to 125 mcg/kg to congestive heart failure patients, milirone had a volume of distribution of 0.38 liters/kg, a mean terminal elimination half-life of 2.3 hours, and a clearance of 0.13 liters/kg/hr. Following intravenous infusions of 0.20 mcg/kg/min to 0.70 mcg/kg/min to congestive heart failure patients, the drug had a volume of distribution of about 0.45 liters/kg, a mean terminal elimination half-life of 2.4 hours, and a clearance of 0.14 liters/kg/hr. These pharmacokinetic parameters were not dose-dependent, and the area under the plasma concentration versus time curve following injections was significantly dose-dependent.

Milirone has been shown (by equilibrium dialysis) to be approximately 70% bound to human plasma protein.

The primary route of excretion of milirone in man is via the urine. The major urinary excretions of orally administered milirone in man are milirone (83%) and its O-glucuronide metabolite (12%). Elimination in normal subjects via the urine is rapid, with approximately 60% recovered within the first two hours following dosing and approximately 90% recovered within the first eight hours following dosing. The mean renal clearance of milirone is approximately 0.3 liters/min, indicative of active secretion.

PHARMACODYNAMICS

In patients with heart failure due to depressed myocardial function, milirone produced a prompt dose and plasma concentration related increase in cardiac output and decreases in pulmonary capillary wedge pressure and vascular resistance, which were accompanied by mild-to-moderate increases in heart rate. Additionally, there is no increased effect on myocardial oxygen consumption.

In uncontrolled studies, hemodynamic improvement during intravenous therapy with milirone was accompanied by clinical symptomatic improvement, but the ability of milirone to relieve symptoms has not been evaluated in controlled clinical trials. The great majority of patients experience improvements in hemodynamic function within 5 to 15 minutes of the initiation of therapy.

In studies in congestive heart failure patients, milirone when administered as a loading injection followed by a maintenance infusion produced significant mean initial increases in cardiac index of 25 percent, 38 percent, and 42 percent at dose regimens of 37.5 mcg/kg/0.375 mcg/kg/min, 50 mcg/kg/0.50 mcg/kg/min, and 75 mcg/kg/0.75 mcg/kg/min, respectively. Over the same range of loading injections and maintenance infusions, pulmonary capillary wedge pressure significantly decreased by 20 percent, 23 percent, and 36 percent, respectively, while systemic vascular resistance significantly decreased by 17 percent, 21 percent, and 37 percent. Mean arterial pressure fell by up to 5 percent at the two lower dose regimens, but by 17 percent at the highest dose. Patients evaluated for 48 hours maintained improvements in hemodynamic function, with no evidence of diminished response (tachyphylaxis). A smaller number of patients have received infusions of milirone for periods up to 72 hours without evidence of tachyphylaxis.

The duration of therapy should depend upon patient responsiveness. Milirone has a favorable inotropic effect in fully digitalized patients without causing signs of glycoside toxicity. Theoretically, in cases of atrial flutter/fibrillation, it is possible that milirone may increase ventricular response rate because of its slight enhancement of AV node conduction. In these cases, digitalis should be considered prior to the institution of therapy with milirone.

Improvement in left ventricular function in patients with ischemic heart disease has been observed. The improvement has occurred without inducing symptoms or electrocardiographic signs of myocardial ischemia.

The steady-state plasma milirone concentrations after approximately 6 to 12 hours of unchanging maintenance infusion of 0.50 mcg/kg/min are approximately 200 ng/mL. Near maximum favorable effects of milirone on cardiac output and pulmonary capillary wedge pressure are seen at plasma milirone concentrations in the 150 ng/mL to 250 ng/mL range.

INDICATIONS AND USAGE

Milirone is indicated for the short-term intravenous treatment of patients with acute decompensated heart failure. Patients receiving milirone should be observed closely with appropriate electrocardiographic equipment. The facility for immediate treatment of potential cardiac events, which may include life threatening ventricular arrhythmias, must be available. The majority of experience with intravenous milirone has been in patients receiving digoxin and diuretics. There is no experience in controlled trials with infusions of milirone for periods exceeding 48 hours.

CONTRAINDICATIONS

Milirone is contraindicated in patients who are hypersensitive to it. Solutions containing dextrose may be contraindicated in patients with known allergy to corn or corn products.

WARNINGS

Whether given orally or by continuous or intermittent intravenous infusion, milirone has not been shown to be safe or effective in the longer (greater than 48 hours) treatment of patients with heart failure. In a multicenter trial of 1088 patients with Class III and IV heart failure, long-term oral treatment with milirone was associated with no improvement in symptoms and an increased risk of hospitalization and death. In this study, patients with Class IV symptoms appeared to be at particular risk of life-threatening cardiovascular reactions. There is no evidence that milirone given by long-term continuous or intermittent infusion does not carry a similar risk.

The use of milirone both intravenously and orally has been associated with increased frequency of ventricular arrhythmias, including nonsustained ventricular tachycardia. Long-term oral use has been associated with an increased risk of sudden death. Hence, patients receiving milirone should be observed closely with the use of continuous electrocardiographic monitoring to allow the prompt detection and management of ventricular arrhythmias.

PRECAUTIONS

General

Milirone should not be used in patients with severe obstructive aortic or pulmonic valvular disease in lieu of surgical relief of the obstruction. Like other inotropic agents, it may aggravate outflow tract obstruction in hypertrophic subaortic stenosis.

Supraventricular and ventricular arrhythmias have been observed in the high-risk population treated. In some patients, injections of milirone and oral milirone have been shown to increase ventricular ectopy, including nonsustained ventricular tachycardia. The potential for arrhythmia, present in congestive heart failure itself, may be increased by many drugs or combinations of drugs. Patients receiving milirone should be closely monitored during infusion.

Milirone produces a slight shortening of AV node conduction time, indicating a potential for an increased ventricular response rate in patients with atrial flutter/fibrillation which is not controlled with digitalis therapy.

During therapy with milirone, blood pressure and heart rate should be monitored and the rate of infusion slowed or stopped in patients showing excessive decreases in blood pressure. If prior vigorous diuretic therapy is presumed to have caused significant decreases in cardiac filling pressure, milirone should be cautiously administered with monitoring of blood pressure, heart rate, and clinical symptomatology.

There is no experience in controlled trials with infusions of milirone for periods exceeding 48 hours. Cases of infusion site reaction have been reported with intravenous milirone therapy (see ADVERSE REACTIONS). Consequently, careful monitoring of the infusion site should be maintained to avoid possible extravasation.

Use in Acute Myocardial Infarction

No clinical studies have been conducted in patients in the acute phase of post myocardial infarction. Until further clinical experience with this class of drugs is gained, milirone is not recommended in these patients.

Laboratory Tests

Fluid and electrolytes: Fluid and electrolyte changes and renal function should be carefully monitored during therapy with milirone. Improvement in cardiac output with resultant diuresis may necessitate a reduction in the dose of diuretic. Potassium loss due to excessive diuresis may predispose digitalized patients to arrhythmias. Therefore, hypokalemia should be corrected by potassium supplementation in advance of or during use of milirone.

Drug Interactions

No untoward clinical manifestations have been observed in limited experience with patients in whom milirone was used concurrently with the following drugs: digitalis glycosides; lidocaine, quinidine; hydralazine, prazosin; isosorbide dinitrate, nitroglycerin; chlorthalidone, furosemide, hydrochlorothiazide, spironolactone; captopril; heparin, warfarin, diazepam, insulin; and potassium supplements.

Chemical Interactions

There is an immediate chemical interaction which is evidenced by the formation of a precipitate when furosemide is injected into an intravenous line of an infusion of milirone. Therefore, furosemide should not be administered in intravenous lines containing milirone.

Carcinogenesis, Mutagenesis, Impairment of Fertility

Twenty-four months of oral administration of milirone to mice at doses up to 40 mg/kg/day (about 50 times the human oral therapeutic dose in a 50 kg patient) was unassociated with evidence of carcinogenic potential. Neither was there evidence of carcinogenic potential when milirone was orally administered to rats at doses up to 5 mg/kg/day (about 6 times the human oral therapeutic dose) for twenty-four months or at 25 mg/kg/day (about 30 times the human oral therapeutic dose) for up to 18 months in males and 20 months in females. Whereas the Chinese Hamster Ovary Chromosome Aberration Assay was positive in the presence of a metabolic activation system, results from the Ames Test, the Mouse Lymphoma Assay, the Micronucleus Test, and the *in vivo* Rat Bone Marrow Metaphase Analysis indicated an absence of mutagenic potential. In reproductive performance studies in rats, milirone had no effect on male or female fertility at oral doses up to 32 mg/kg/day.

Animal Toxicity

Oral and intravenous administration of toxic dosages of milirone to rats and dogs resulted in myocardial degeneration/fibrosis and endocardial hemorrhage, principally affecting the left ventricular papillary muscles. Coronary vascular lesions characterized by periarterial edema and inflammation have been observed in dogs only. The myocardial/endocardial changes are similar to those produced by beta-adrenergic receptor agonists such as isoproterenol, while the vascular changes are similar to those produced by minoxidil and hydralazine. Doses within the recommended clinical dose range (up to 1.13 mg/kg/day) for congestive heart failure patients have not produced significant adverse effects in animals.

Pregnancy

Oral administration of milirone to pregnant rats and rabbits during organogenesis produced no evidence of teratogenicity at dose levels up to 40 mg/kg/day and 12 mg/kg/day, respectively. Milirone did not appear to be teratogenic when administered intravenously to pregnant rats at doses up to 3 mg/kg/day (about 2.5 times the maximum recommended clinical intravenous dose) or pregnant rabbits at doses up to 12 mg/kg/day, although an increased resorption rate was apparent at both 8 mg/kg/day and 12 mg/kg/day (intravenous) in the latter species. There are no adequate and well-controlled studies in pregnant women. Milirone should be used during pregnancy only if the potential benefit justifies the potential risk to the fetus.

Nursing Mothers

Caution should be exercised when milirone is administered to nursing women, since it is not known whether it is excreted in human milk.

Pediatric Use

Safety and effectiveness in pediatric patients have not been established.

Use in Elderly Patients

There are no special dosage recommendations for the elderly patient. Ninety percent of all patients administered milirone in clinical studies were within the age range of 45 to 70 years, with a mean age of 61 years. Patients in all age groups demonstrated clinically and statistically significant responses. No age-related effects on the incidence of adverse reactions have been observed. Controlled pharmacokinetic studies have not disclosed any age-related effects on the distribution and elimination of milirone.

ADVERSE REACTIONS

Cardiovascular Effects

In patients receiving milirone in Phase II and III clinical trials, ventricular arrhythmias were reported in 12.1%: Ventricular ectopic activity, 8.5%; nonsustained ventricular tachycardia, 2.8%; sustained ventricular tachycardia, 1% and ventricular fibrillation, 0.2% (2 patients experienced more than one type of arrhythmia). Holter recordings demonstrated that in some patients injection of milirone increased ventricular ectopy, including nonsustained ventricular tachycardia. Life-threatening arrhythmias were infrequent and when present have been associated with certain underlying factors such as preexisting arrhythmias, metabolic abnormalities (e.g. hypokalemia), abnormal digoxin levels and catheter insertion. Milirone was not shown to be arrhythmogenic in an electrophysiology study. Supraventricular arrhythmias were reported in 3.8% of the patients receiving milirone. The incidence of both supraventricular and ventricular arrhythmias has not been related to the dose or plasma

milirone concentration. Other cardiovascular adverse reactions include hypotension, 2.9% and angina/chest pain, 1.2%. In the post marketing experience, there have been rare cases of "torsades de pointes" reported.

CNS Effects

Headaches, usually mild to moderate in severity, have been reported in 2.9% of patients receiving milirone.

Other Effects

Other adverse reactions reported, but not definitely related to the administration of milirone include hypokalemia, 0.6%; tremor, 0.4%; and thrombocytopenia, 0.4%.

Post-Marketing Adverse Event Reports

In addition to adverse events reported from clinical trials, the following events have been reported from worldwide post-marketing experience with Milirone:

Isolated spontaneous reports of bronchospasm and anaphylactic shock. Liver function test abnormalities and skin reactions such as rash. Administration site conditions: Infusion site reaction.

OVERDOSAGE

Doses of milirone may produce hypotension because of its vasodilator effect. If this occurs, administration of milirone should be reduced or temporarily discontinued until the patient's condition stabilizes. No specific antidote is known, but general measures for circulatory support should be taken.

DOSEAGE AND ADMINISTRATION

Milirone Lactate in 5% Dextrose Injection should be administered with a loading dose followed by a continuous infusion (maintenance dose) according to the following guidelines:

LOADING DOSE

50 mcg/kg: Administer slowly over 10 minutes

Note: Milirone (200 mcg per mL) in Plastic Container is for intravenous infusion only. Dosage recommendations using a 1 mg per mL concentration of milirone are included for informational purposes only. The table below shows the loading dose in milliliters (mL) of milirone (1 mg/mL) by patient body weight (kg).

Loading Dose (mL) Using 1 mg/mL Concentration										
Patient Body Weight (kg)										
kg	30	40	50	60	70	80	90	100	110	120
mL	1.5	2.0	2.5	3.0	3.5	4.0	4.5	5.0	5.5	6.0

The loading dose may be given undiluted, but diluting to a rounded total volume of 10 or 20 mL (see Maintenance Dose for diluents) may simplify the visualization of the injection rate.

	Infusion Rate	Total Daily Dose (24 Hours)	
		Minimum Standard	Maximum
	0.375 mcg/kg/min	0.59 mg/kg	Administer as a continuous intravenous infusion
	0.50 mcg/kg/min	0.77 mg/kg	
	0.75 mcg/kg/min	1.13 mg/kg	

The infusion rate should be adjusted according to hemodynamic and clinical response. Patients should be closely monitored. In controlled clinical studies, most patients showed an improvement in hemodynamic status as evidenced by increases in cardiac output and reductions in pulmonary capillary wedge pressure.

Note: See "Dosage Adjustment in Renally Impaired Patients." Dosage may be titrated to the maximum hemodynamic effect and should not exceed 1.13 mg/kg/day. Duration of therapy should depend upon patient responsiveness. The maintenance dose in mL/hr by patient body weight (kg) may be determined by reference to the following table.

Maintenance Dose (mcg/kg/min)	Milirone Infusion Rate (mL/hr) Using 200 mcg/mL Concentration										
	Patient Body Weight (kg)										
	30	40	50	60	70	80	90	100	110	120	
0.375	3.4	4.5	5.6	6.8	7.9	9.0	10.1	11.3	12.4	13.5	
0.400	3.6	4.8	6.0	7.2	8.4	9.6	10.8	12.0	13.2	14.4	
0.500	4.5	6.0	7.5	9.0	10.5	12.0	13.5	15.0	16.5	18.0	
0.600	5.4	7.2	9.0	10.8	12.6	14.4	16.2	18.0	19.8	21.6	
0.700	6.3	8.4	10.5	12.6	14.7	16.8	18.9	21.0	23.1	25.2	
0.750	6.8	9.0	11.3	13.5	15.8	18.0	20.3	22.5	24.8	27.0	

Dosage Adjustment in Renally Impaired Patients

Data obtained from patients with severe renal impairment (creatinine clearance = 0 to 30 mL/min) but without congestive heart failure have demonstrated that the presence of renal impairment significantly increases the terminal elimination half-life of milirone. Reductions in infusion rate may be necessary in patients with renal impairment. For patients with clinical evidence of renal impairment, the recommended infusion rate can be obtained from the following table:

Creatinine Clearance (mL/min/1.73m ²)	Infusion Rate (mcg/kg/min)
5	0.20
10	0.23
20	0.28
30	0.33
40	0.38
50	0.43

Parenteral drug products should be inspected visually for particulate matter and discoloration prior to administration, whenever solution and container permit. Milirone Lactate in 5% Dextrose Injection is a clear, colorless to pale yellow solution.

DIRECTIONS FOR USE

When administering Milirone Lactate in 5% Dextrose Injection by continuous infusion, it is advisable to use a calibrated electronic infusion device.

To open

Tear at the notch and open the overwrap to remove solution container. Some opacity of the plastic due to moisture absorption during the sterilization process may be observed. This is normal and does not affect the solution quality or safety. The opacity will diminish gradually. After removing overwrap, check for minute leaks by squeezing inner bag firmly. If leaks are found, discard solution as sterility may be impaired.

Preparation for Administration

Visually inspect the container. If the administration port is damaged, detached, or not present, discard container as solution path sterility may be impaired. (Use aseptic technique)

- Suspend container from eyellet support.
- Remove top portion of twist off port at bottom of container.
- Attach administration set. Refer to complete directions accompanying set.

WARNING: DO NOT USE IN SERIES CONNECTIONS. Do not administer simultaneously with blood. Caution: Do not use plastic containers in series connections. Such use could result in air embolism due to residual air being drawn from the primary container before administration of the fluid from the secondary container is complete.

HOW SUPPLIED

Milirone Lactate in 5% Dextrose Injection is a clear, colorless to pale yellow solution and is supplied in Infusion bags as follows:

NDC No.	Milirone Lactate in 5% Dextrose Injection (200 mcg (0.2 mg) per mL)	Pack Style
70069-872-01	20 mg per 100 mL Single-Dose Infusion bag	1 Single-dose Infusion Bag in an Overwrap
70069-873-01	40 mg per 200 mL Single-Dose Infusion bag	1 Single-dose Infusion Bag in an Overwrap

Exposure of pharmaceutical products to heat should be minimized. Avoid excessive heat. Protect from freezing. It is recommended that the Flexible Containers be stored at room temperature, 25°C (77°F), however, brief exposure up to 40°C (104°F) does not adversely affect the product.

Manufactured for:
Somerset Therapeutics, LLC.
Somerset, NJ 08873
Made in India
Code: TN/Drugs/TN00003462
Code: TN/Drugs/TN00006405

July, 2025
22201394