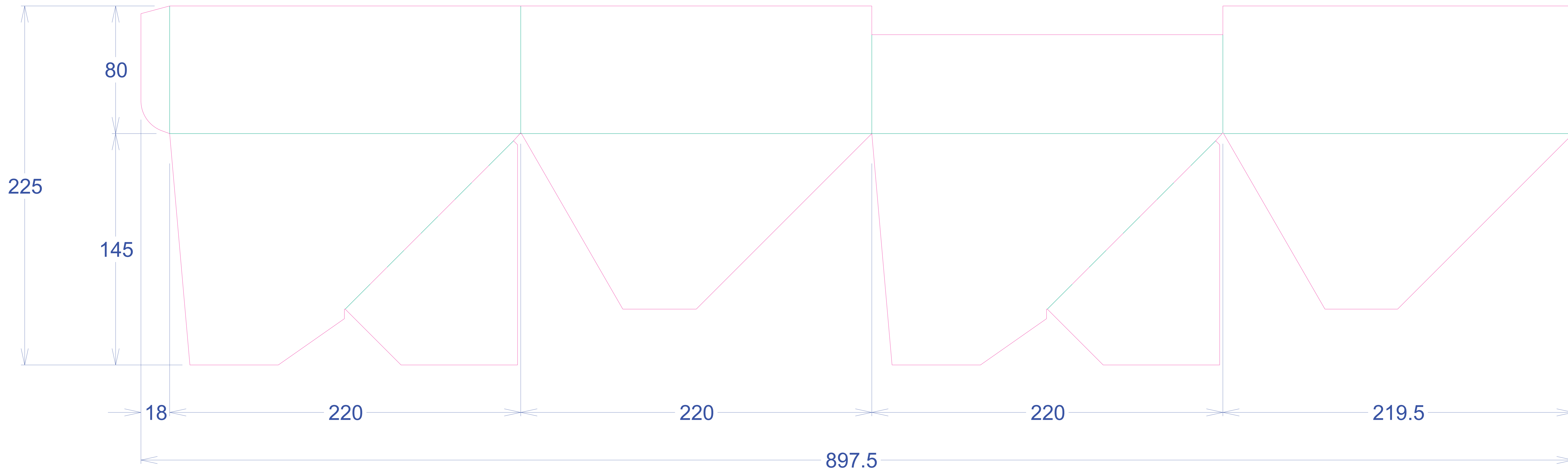
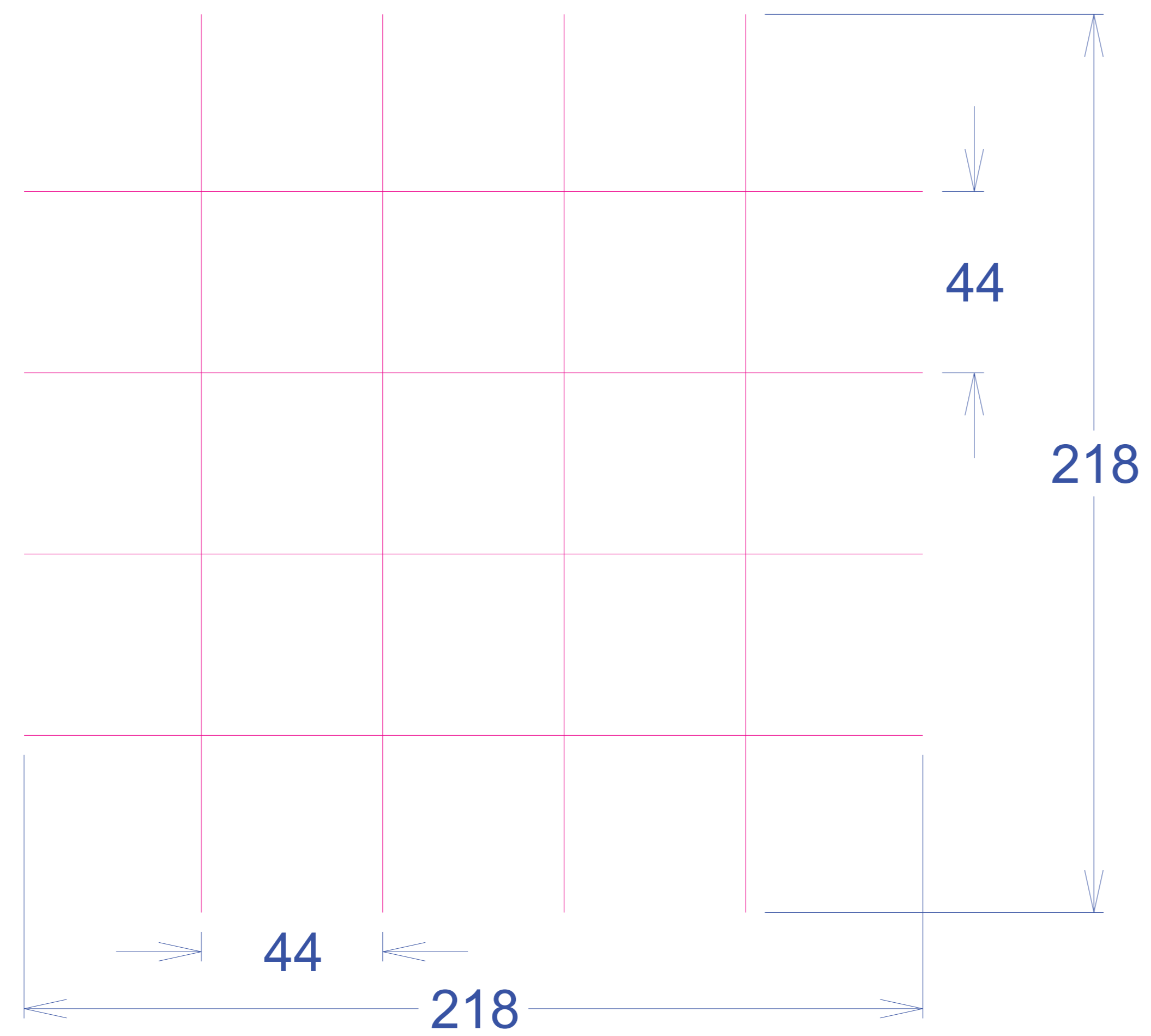


| SOMERSET THERAPEUTICS PRIVATE LIMITED |   |  |                              | ARTWORK APPROVAL FORM                 |   |                                      |
|---------------------------------------|---|--|------------------------------|---------------------------------------|---|--------------------------------------|
| <b>Product</b>                        | Sodium Acetate Injection USP, 100 mEq/50mL (2 mEq/mL), Pharmacy Bulk Package.   |  |                              | <b>Style:</b>                         | Lock Bottom   |                                      |
| <b>Specification:</b>                 | Printed on ITC 400 GSM (±5%) using CFBB with Siegwirk India aqueous varnish (benzophenone free)<br>Ink : Siegwirk / DIC India (benzophenone free) |  |                              | <b>Colours:</b>                       | <span style="color: blue;">■</span> P. 2202 C <span style="color: blue;">■</span> P. 300 C<br><span style="color: red;">■</span> Red 032 C <span style="color: black;">■</span> Black C |                                      |
|                                       |   |  |                              | <b>Dimension:</b>                     | 223 x 223 x 85 mm (± 1 mm) (LxWxH)  |                                      |
| <b>Item Code</b>                      | 1201293   | <b>Remarks</b>                           |                              | <b>No of Folds:</b><br>(only for PIL) | NA  | <b>Artwork Print Scaled to</b><br>NA |
| <b>Prepared by</b><br>PDD             | <b>Verified by</b><br>FD  | <b>Approved by</b><br>Regulatory Affairs | <b>Checked by</b><br>Packing | <b>Checked by</b><br>QA               |   | <b>Approved by</b><br>QA             |
|                                       |   |  |                              |                                       |   |                                      |

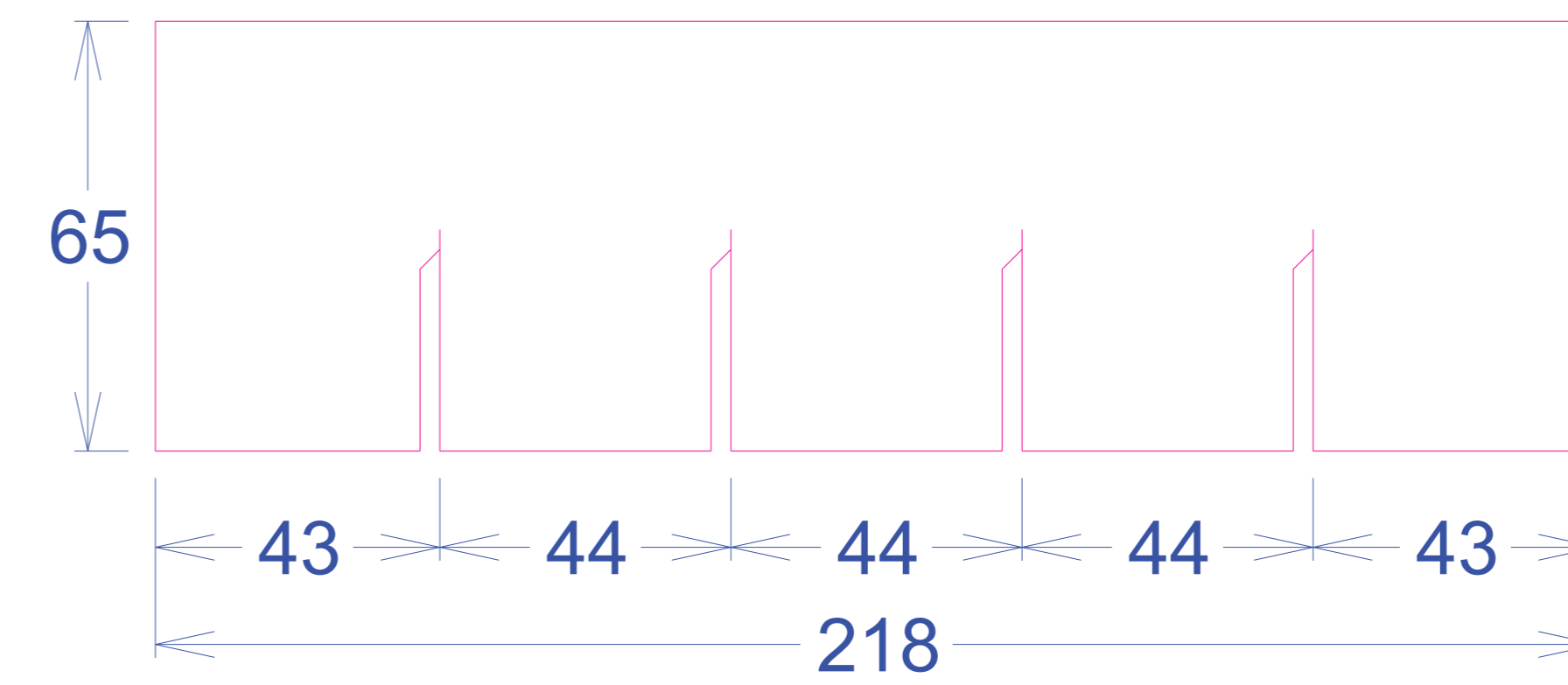
DOES NOT PRINT  
■ Die Line    ■ No Varnish Area



| SOMERSET THERAPEUTICS PRIVATE LIMITED |                                      |   |                               | ARTWORK APPROVAL FORM                  |   |                                    |    |
|---------------------------------------|--------------------------------------|---|-------------------------------|--|---|------------------------------------|----|
| <b>Product</b>                        | CARTON INNER LINER 220 x 220 x 80 mm |   |                               | <b>Style:</b>                          | NA                                      |                                    |    |
| <b>Specification:</b>                 | ITC 400 GSM ( $\pm 5\%$ ) using CFBB |   |                               | <b>Colours:</b>                        | NA                                      |                                    |    |
|                                       |                                      |   |                               | <b>Dimension:</b>                      | 220 x 220 x 80 mm ( $\pm 1$ mm) (LxWxH) |                                    |    |
| <b>Item Code</b>                      | 1200760                              | <b>Remarks</b>                            |                               | <b>No of Folds:<br/>(only for PIL)</b> | NA                                      | <b>Artwork Print<br/>Scaled to</b> | NA |
| <b>Prepared by<br/>PDD</b>            | <b>Verified by<br/>FD</b>            | <b>Approved by<br/>Regulatory Affairs</b> | <b>Checked by<br/>Packing</b> | <b>Checked by<br/>QA</b>               |   | <b>Approved by<br/>QA</b>          |    |
|                                       |                                      |   |                               |  |   |                                    |    |



**Partitions and Separators  
218 X 218 X 65**



| SOMERSET THERAPEUTICS PRIVATE LIMITED |                              |   |                               | ARTWORK APPROVAL FORM                  |  |                                    |    |
|---------------------------------------|------------------------------|---|-------------------------------|--|--|------------------------------------|----|
| <b>Product</b>                        | PARTITIONS 218 x 65 mm       |   |                               | <b>Style:</b>                          | NA                                     |                                    |    |
| <b>Specification:</b>                 | ITC 400 GSM (±5%) using CFBB |   |                               | <b>Colours:</b>                        | NA                                     |                                    |    |
|                                       |                              |   |                               | <b>Dimension:</b>                      | 218 x 65 mm (± 1 mm) (LxH) (4 + 4 nos) |                                    |    |
| <b>Item Code</b>                      | 1200758                      | <b>Remarks</b>                            |                               | <b>No of Folds:<br/>(only for PIL)</b> | NA                                     | <b>Artwork Print<br/>Scaled to</b> | NA |
| <b>Prepared by<br/>PDD</b>            | <b>Verified by<br/>FD</b>    | <b>Approved by<br/>Regulatory Affairs</b> | <b>Checked by<br/>Packing</b> | <b>Checked by<br/>QA</b>               |  | <b>Approved by<br/>QA</b>          |    |
|                                       |                              |   |                               |  |  |                                    |    |